

# Aero Atlas Viewer Software

The Viewer software is a site license (Unlimited Computer License) that includes (1) free seat of data coverage. The data is distributed separately and is a per seat license (Computer Specific License). Multiple data coverage areas can be installed on a single computer creating a seamless map. Five (5) Data Coverage Areas are available and can be updated as needed. The Viewer is not an on-line subscription service.

## Search Options:

- Street Search with Highlighting and Labeling
- Subdivision Search
- Proximity Search
- Page and Grid Search
- Land Lot and District Search

## Map Display and Zooming Options:

- Dynamic Map Zooming and Panning
- Color or Monochrome View
- Display Map Page, Grid, Scale
- Show Label Option

## GIS Functions:

- Import Raster and Vector Files with custom display options
- Selectable Map Features
- Measure Distance
- Multiple Geographic Projection Support

## Routing Tools:

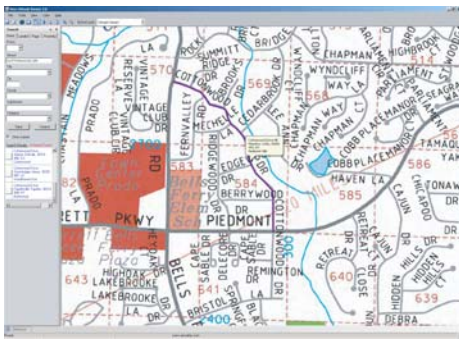
- Save street lists and plot an overview map with user defined label or export to CSV or Shapefile
- GPS interface (GPS antenna not included)

## Drawing and Labeling Function:

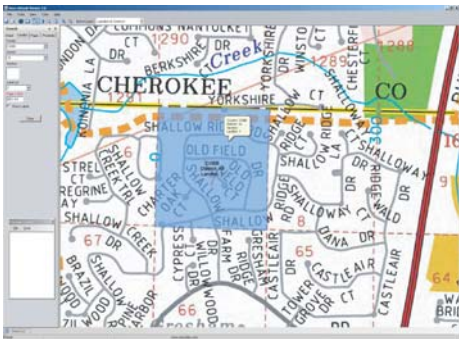
- Complete drawing tools
- Place Marker and Label

## Printing and Saving Functions:

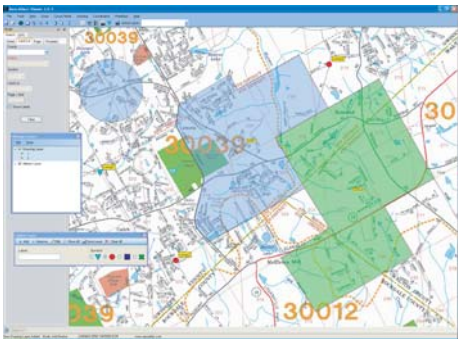
- Save image as JPG, TIF (Georeferenced), BMP, PDF
- Print view or print street level up to 4 x 5 miles in Landscape or Portrait



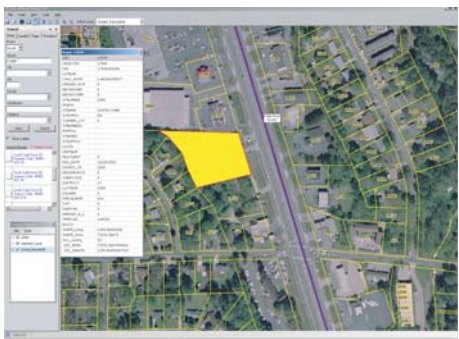
Street Search with Highlighting Feature



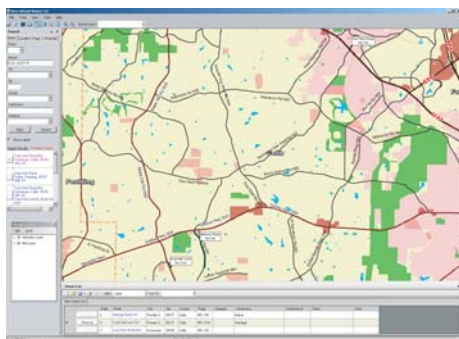
Land Lot and District Search



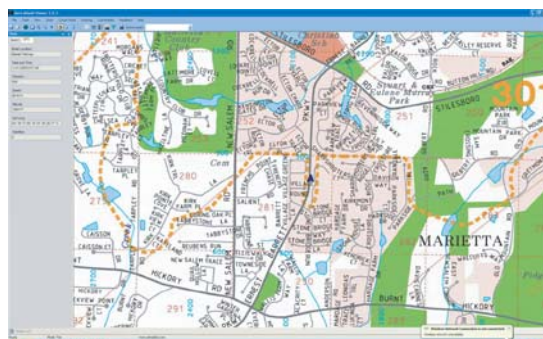
Drawing and Labeling Tools



Custom Layers (Custom Layers are Supplied by user)



Plot Multiple Streets for Routing



GPS Interface